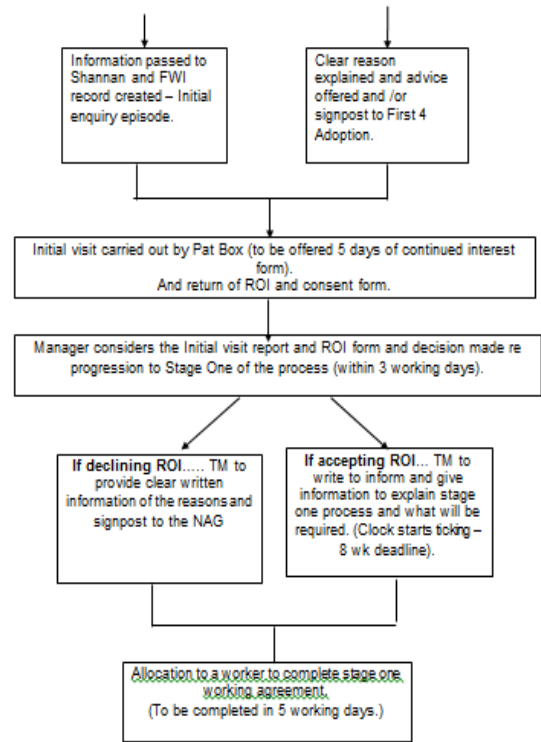
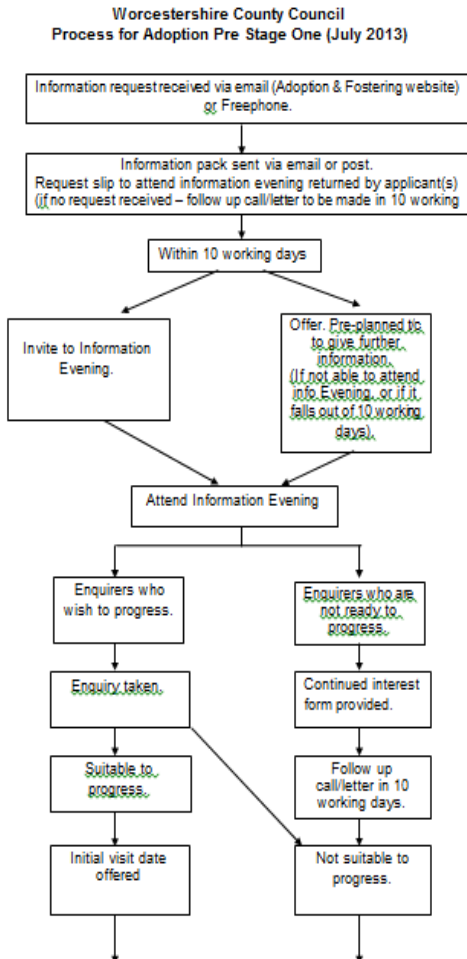


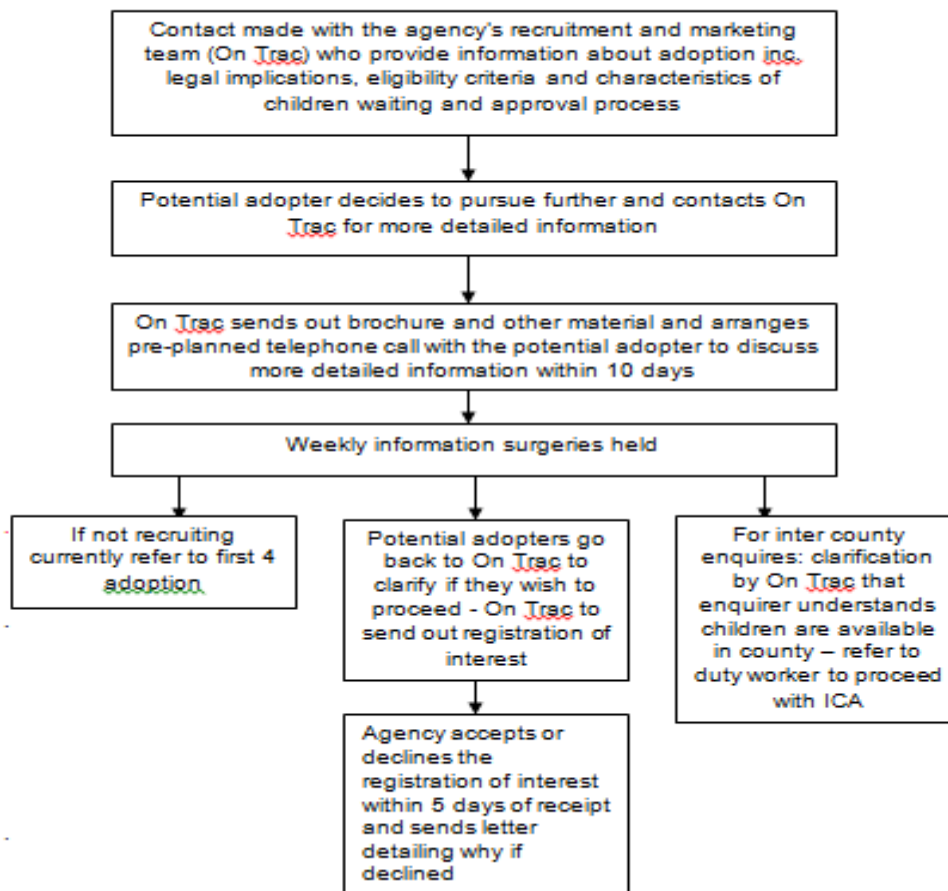
ADOPTION ASSESSMENT PROCESS

Eligibility to Adopt

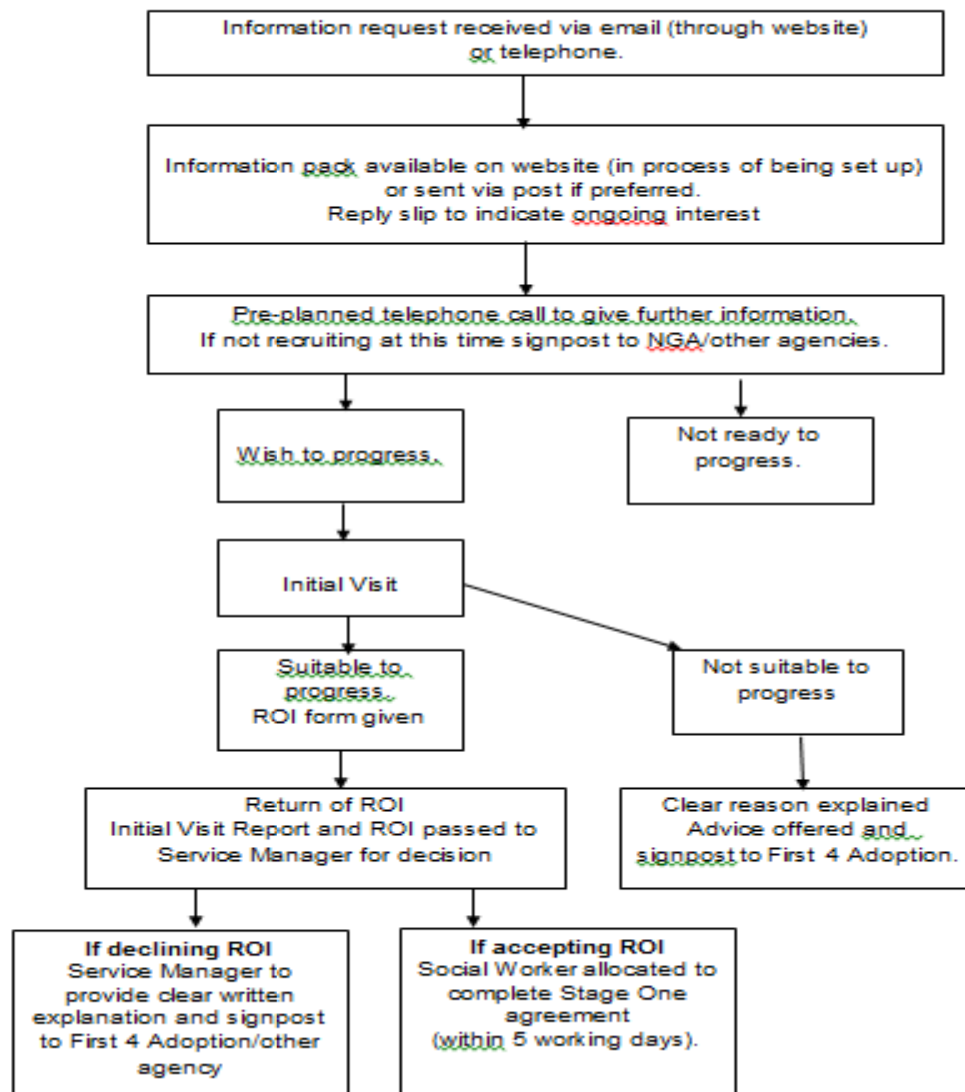
Worcestershire



**Shropshire/Telford Councils
Process for Adoption Eligibility to Adopt**



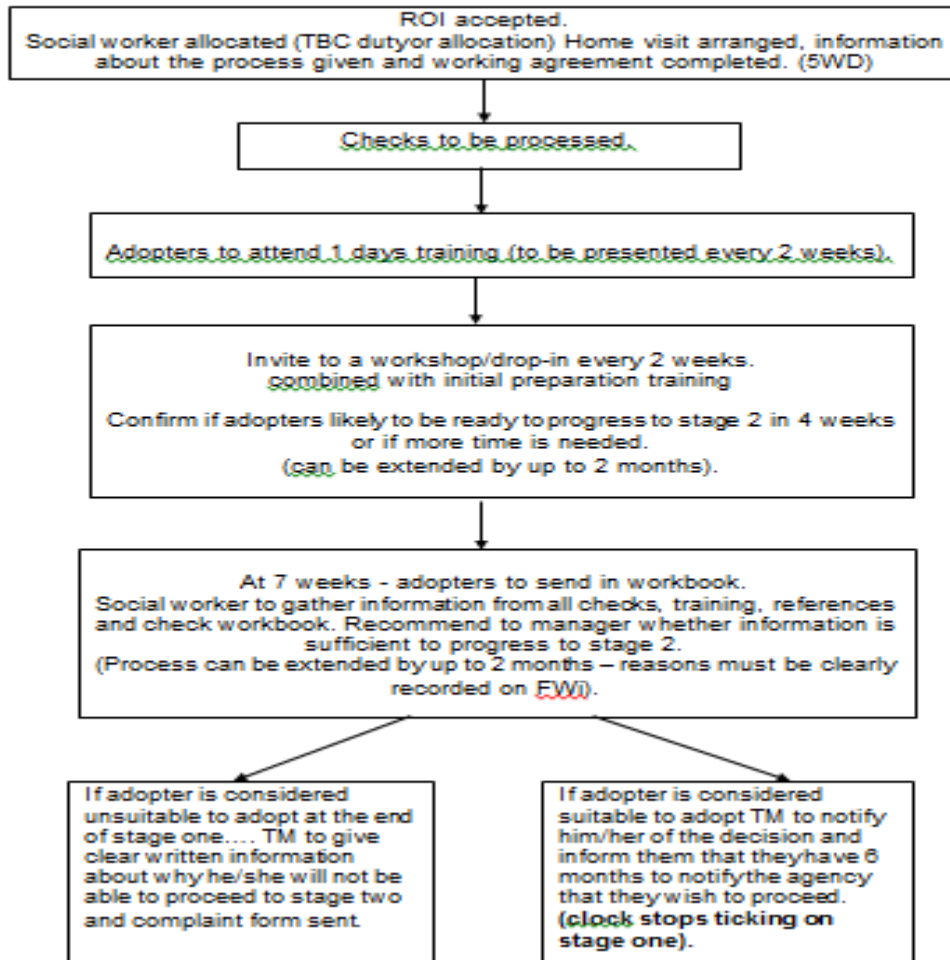
**Herefordshire Council
Process for Adoption Pre Stage 1**



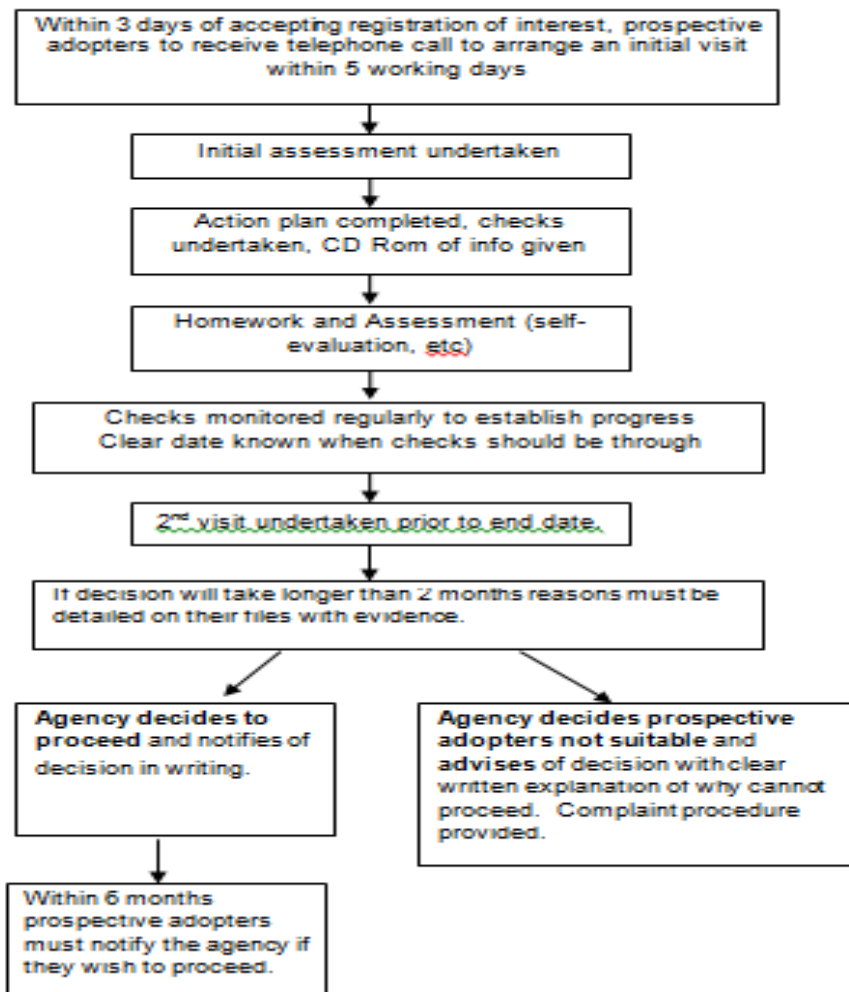
Assessment (Stage 1)

Worcestershire

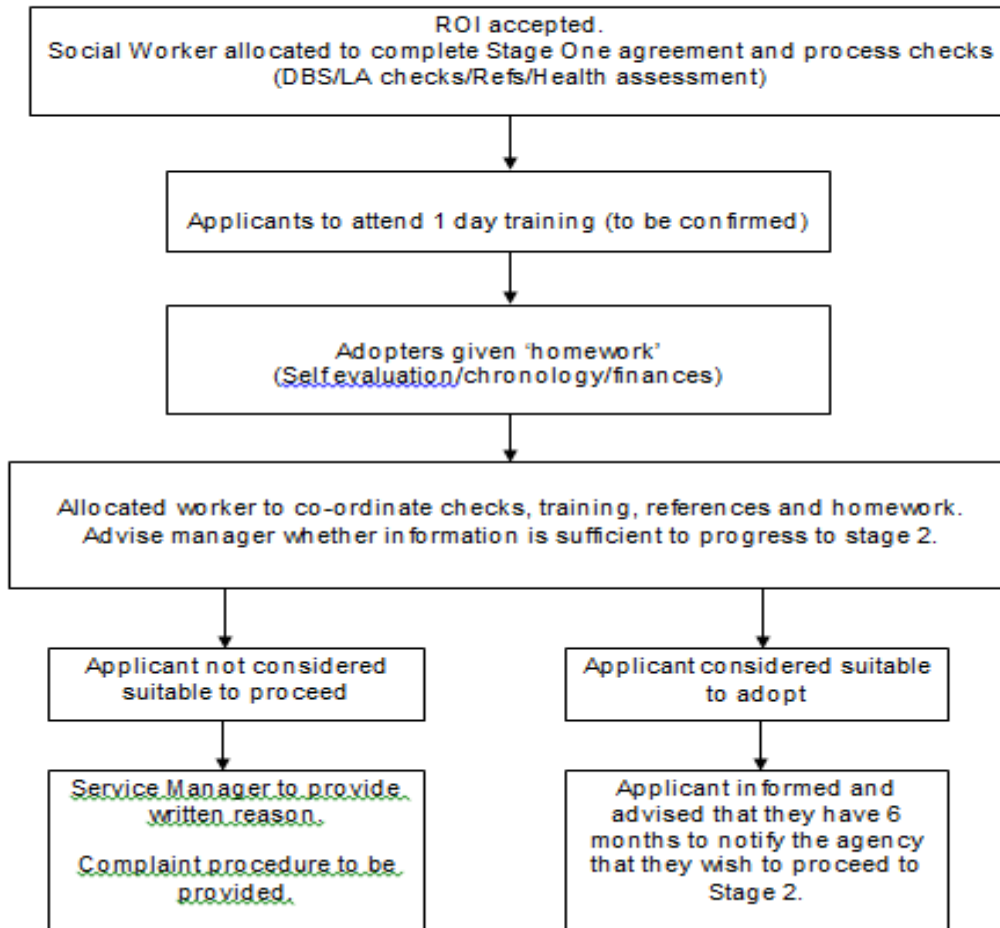
Worcestershire County Council Process for Adoption - Assessment Stage One (Two months)



**Shropshire/Telford Councils
Process for Adoption - Pre Assessment Stage 1**



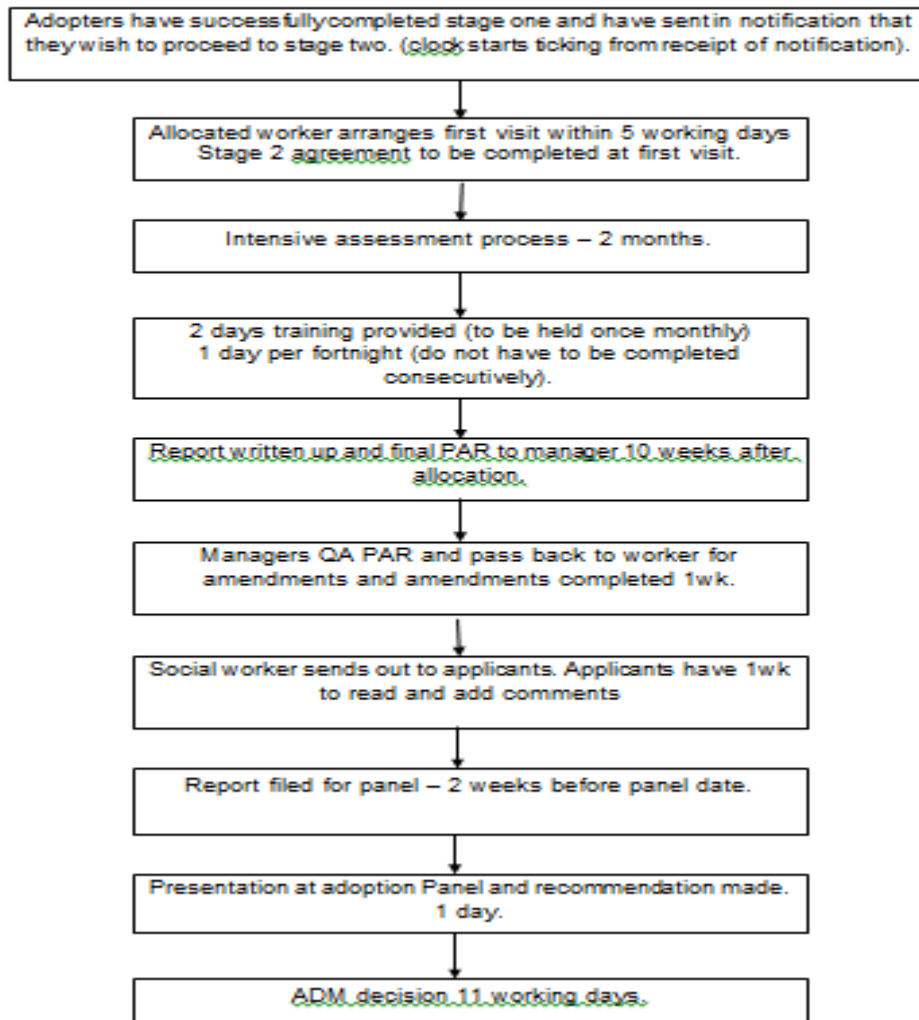
**Herefordshire Council
Process for Adoption - Assessment Stage 1**



Assessment (Stage 2)

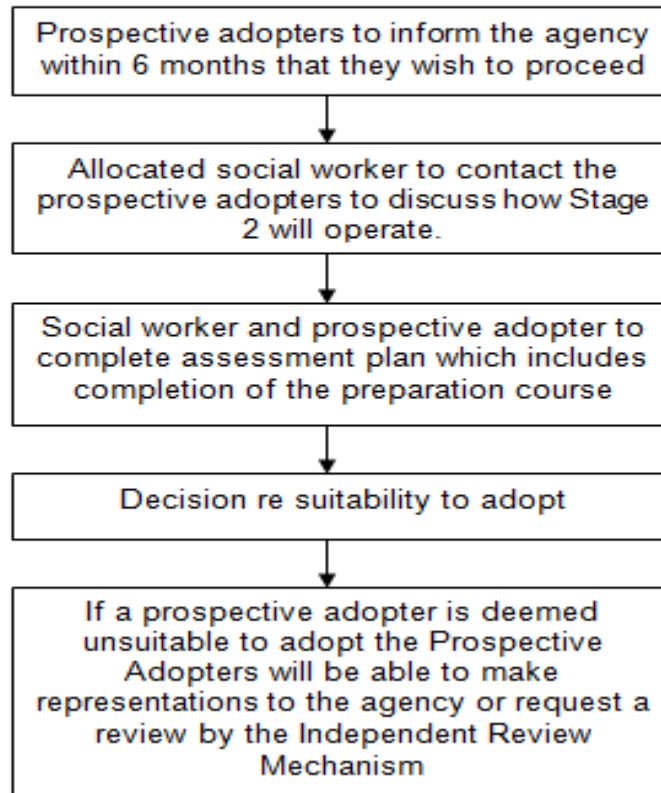
Worcestershire

Worcestershire County Council Process for Adoption Assessment Stage Two (Four months)



**Shropshire/Telford Councils
Process for Adoption - Assessment Stage 2**

In exceptional circumstances another agency can complete Stage 2.



**Herefordshire Council
Process for Adoption Assessment Stage 2**

